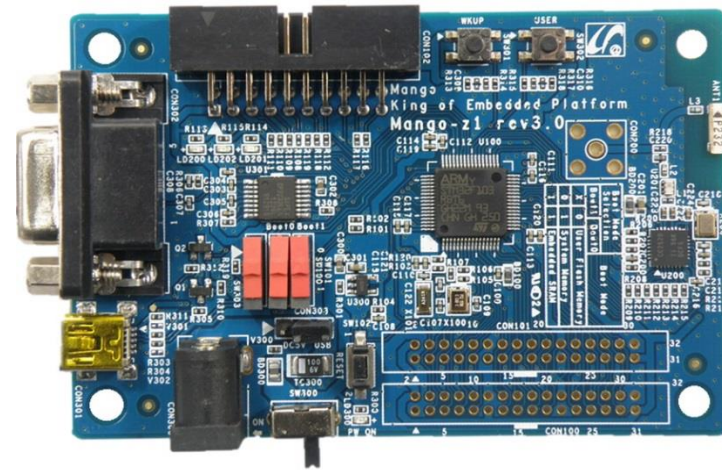


Quick Start Guide

CRZ.

CRZ. TECHNOLOGY



Mango-Z1

About the Mango-Z1

- CPU : STMicroelectronics 사의 STM32F103RB 72Mhz Processor
- Memory
 - 128KB (FLASH)
 - 20KB(RAM)
- UART :DSUB 9
- 무선통신 : CC2520 장착
- (직선거리:200M 수신 ,Zigbee 통신 및 다양한 2.4Ghz 대역폭 무선 통신 가능)
- JTAG :20 Pin Standard
- Expansion Connector: 32 Pin *2 EA



QRZ TECHNOLOGY

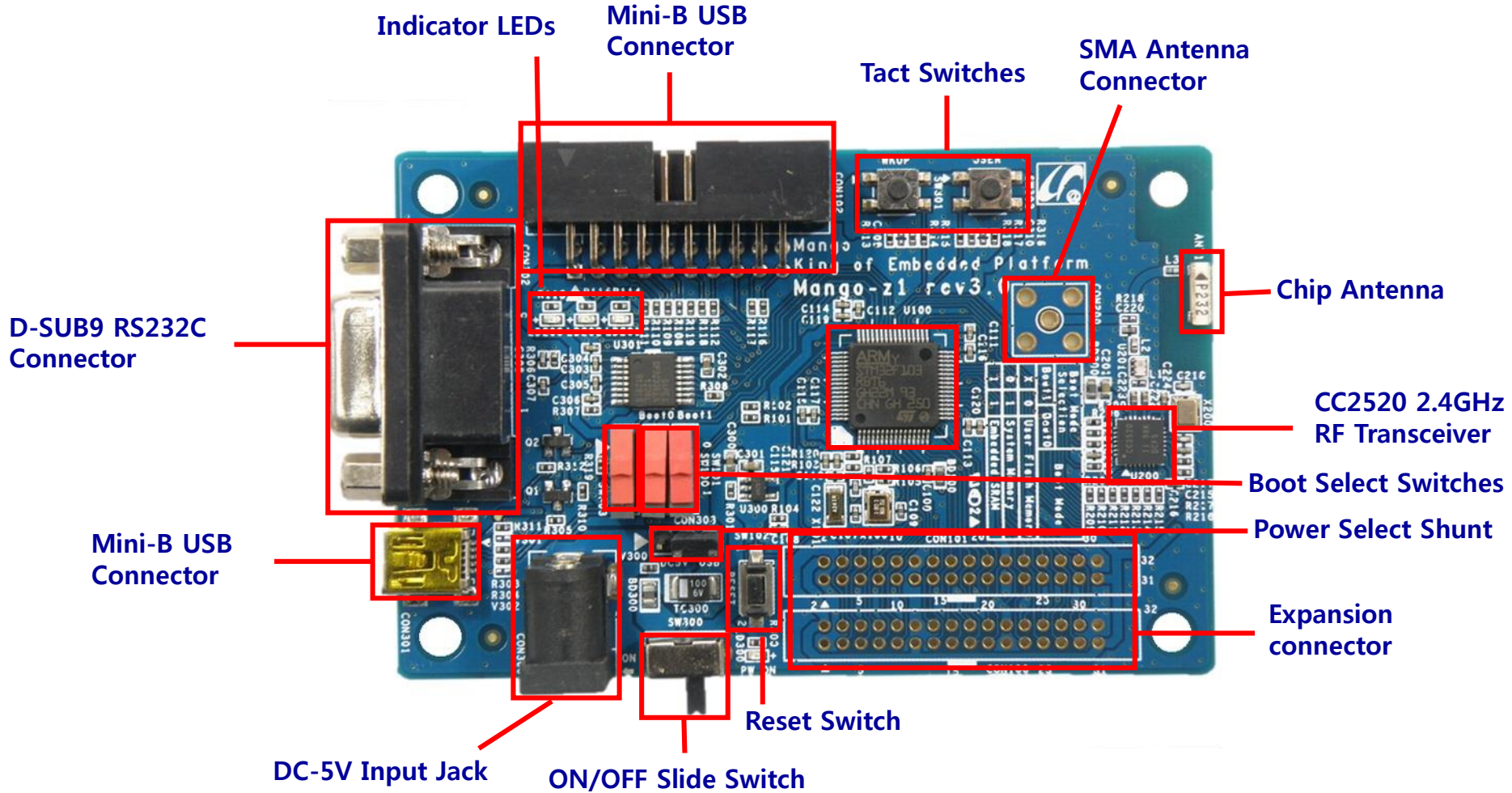
Getting Started

- ❖ Boards : Mango-Z1 Board, CM usb to RS232 module
- ❖ Cables : mini-usb Cable 1ea
- ❖ Power Supply : 5V /2A adapter
- ❖ Documentation : Quick Start Guide (this document)



QRZ TECHNOLOGY

Get to Know the Mango-Z1

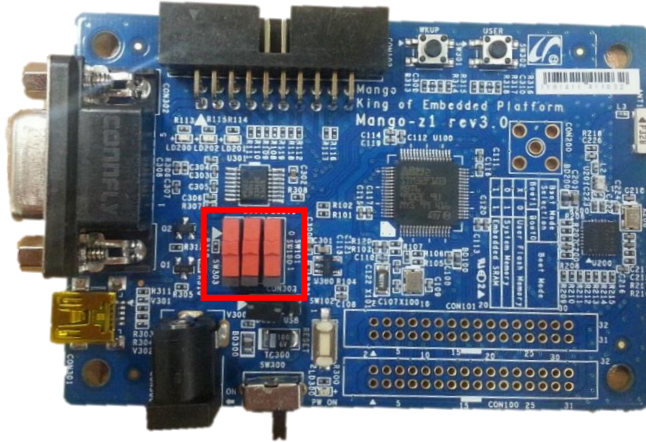


QRZ TECHNOLOGY

Setting up the Board

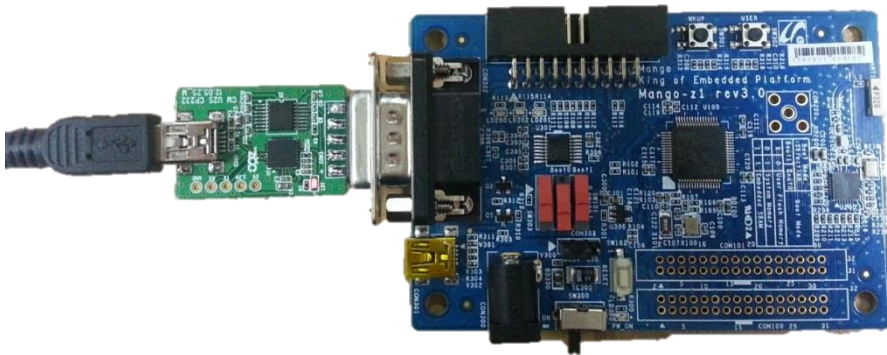
1

Mango-Z1보드 Boot select Switches를 설정한다.



2

Mango-Z1보드에 mini-usb cable과 CM usb to RS232 module 연결



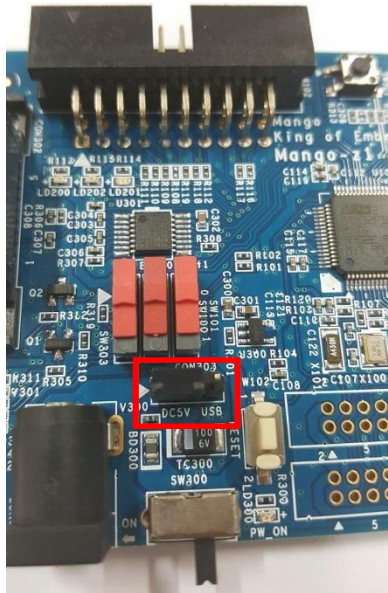
CRZ TECHNOLOGY

Setting up the Board

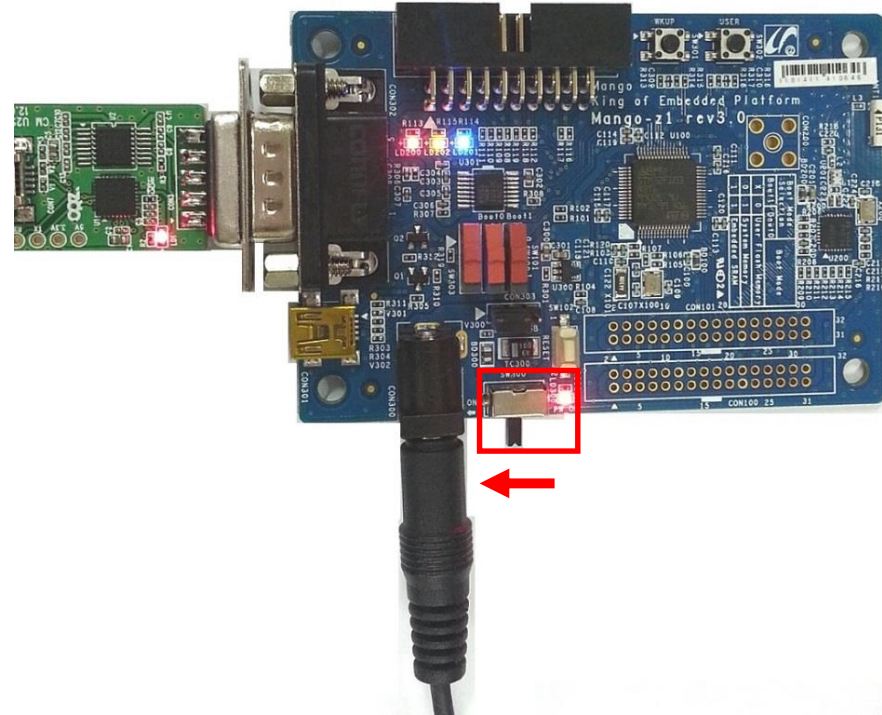
4

Power 연결(5V/2A 어댑터 사용)

5V/2A 어댑터를 Mango-Z1 보드에 연결합니다. 전원이 정상적으로 연결되면 Power LED가 켜집니다.



Power Select Shunt를
DC5V 방향으로 설정한다.



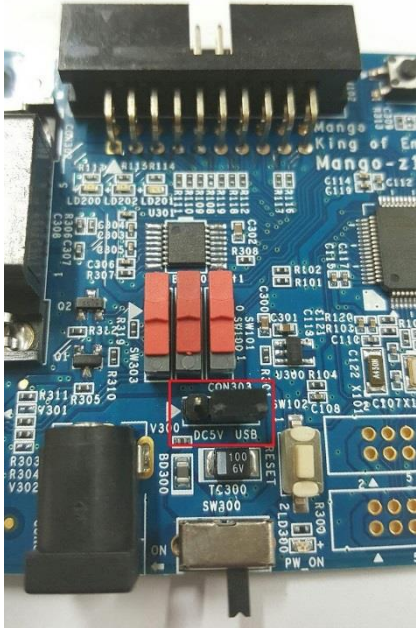
QRZ TECHNOLOGY

Setting up the Board

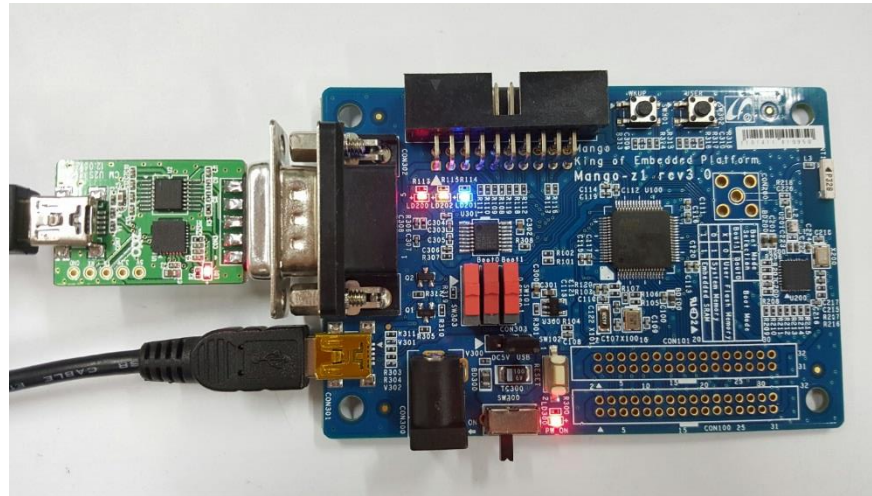
5

Power 연결(Mini USB Cable 사용)

Mini USB Cable을 Mango-Z1 보드에 연결합니다. 전원이 정상적으로 연결되면 Power LED가 켜집니다.



Power Select Shunt를 USB 방향으로 설정한다.



QRZ TECHNOLOGY

Setting up the Board

6

디버깅 메시지 확인

터미널 프로그램을 연결하여 다음과 같은 디버깅 메시지를 확인하면 정상동작을 하는 것입니다.

```
-----  
Mango Z1 test start...  
Press menu key  
-----  
0> System Information  
-----  
1> LED Test  
2> KEY Test  
3> ZigBee Test  
4> USB HID Test  
5>  
-----  
x> quit
```



QRZ TECHNOLOGY



For more information , visit
<http://www.mangoboard.com>
<http://cafe.naver.com/embeddedcrazyboys>